



NWS Briefing

November 12th, 2020 Pacific Storm



WHAT WE KNOW

- A warm front will move inland today bringing rain and light snow to the Cascades
- A cold front will follow creating gusty southerly winds and bringing more snow to the Cascades
- How confident are we?
 - System has changed **significantly** over the last 24-hours with far less impacts than previously expected
 - Second front has weakened which will likely lower winds except along the central Oregon coast



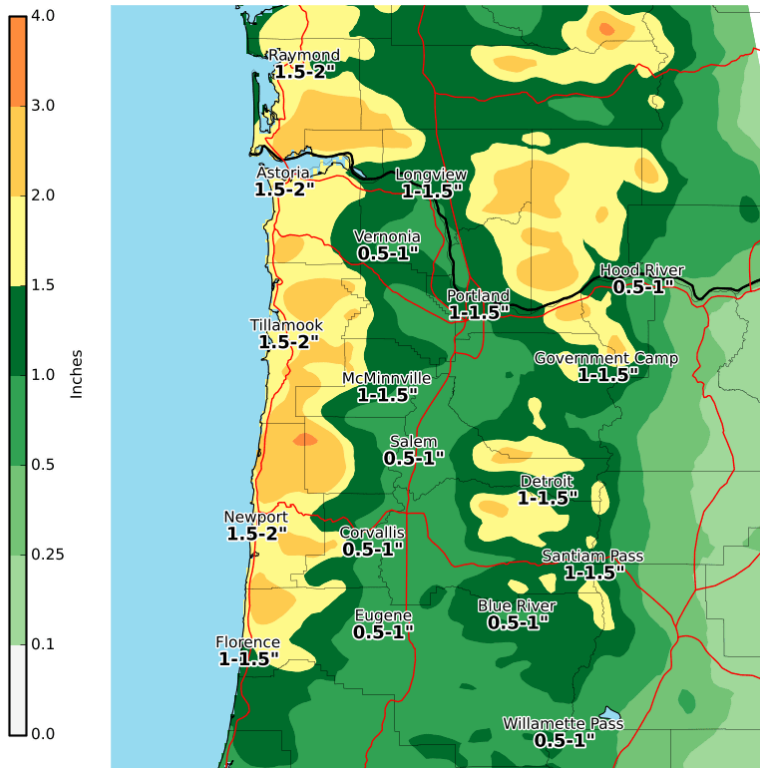
OVERVIEW / POTENTIAL IMPACTS

- A dynamic fall system bringing heavy rain, gusty winds and Cascade Snow
- This evening through Saturday, 11/14/2020, morning
- Strong winds and heavier snow falling at Cascade pass level
 - Winter Storm Warning in effect from 6pm tonight – 8pm Friday



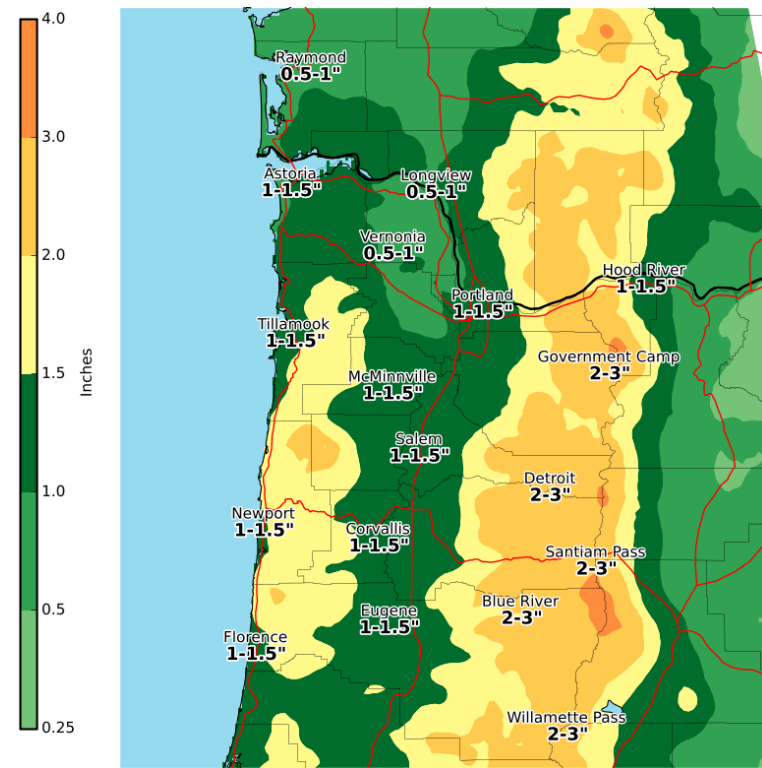
RAINFALL ACCUMULATION (THU AM – SAT AM)

Thur (10 am) – Fri (7 am)



1.5-2" – Coast/Coast Range/Cascades
.75-1.5" – Inland valleys

Fri (7 am) – Sat (7 am)



1-1.5" – Coast/Coast Range/inland valleys
2-3" – Cascades



RAIN & BURN SCARS

- Eagle Creek (most likely)
 - Thu 10am – Fri 7am: 1.5-2 inches
 - Fri 7am – Sat 7am: 2-3 inches
 - Heaviest rain expected Thu night – Fri afternoon
 - No potential impacts expected
- Riverside (most likely)
 - Thu 10am – Fri 7am: 1-1.5 inches
 - Fri 7am – Sat 7am: 2-2.5 inches
 - Heaviest rain expected early Fri morning – Fri afternoon
 - No potential impacts expected



RAIN & BURN SCARS

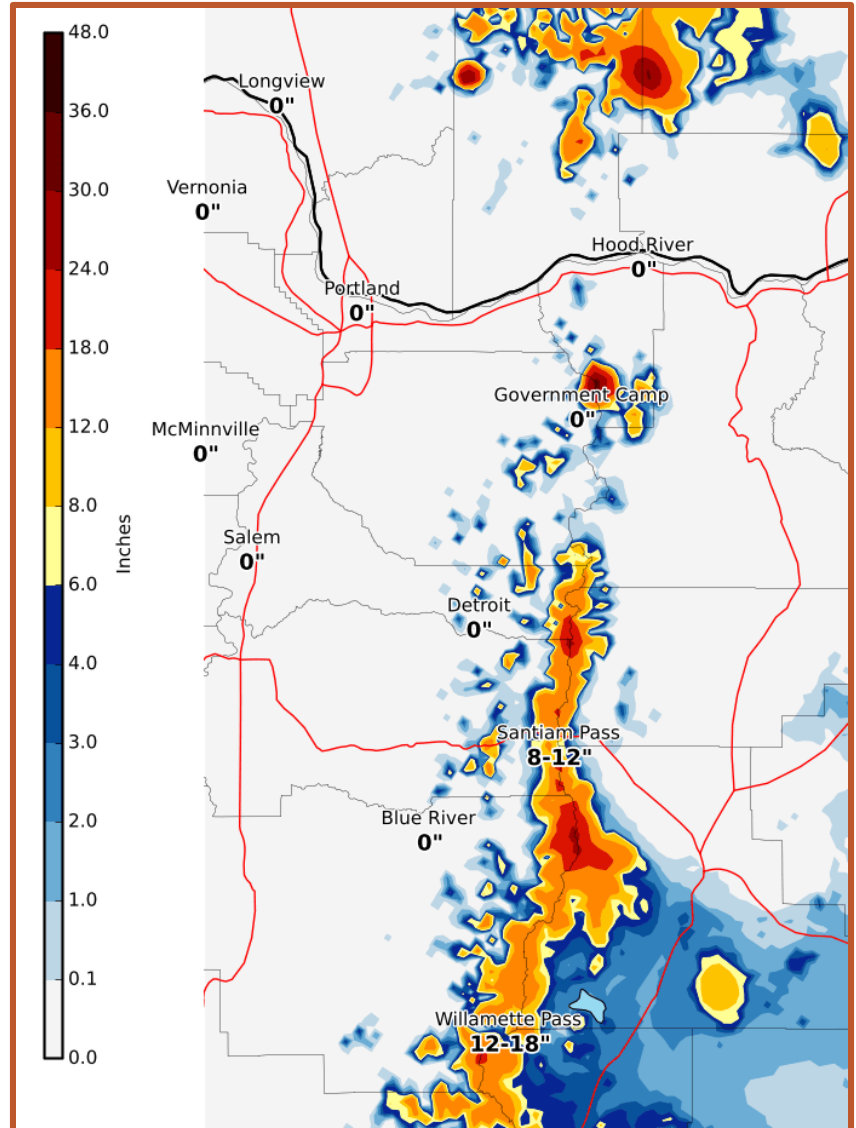
- Beachie Creek & Lionshead (most likely)
 - Thu 10am – Fri 7am: 1.5-2 inches
 - Fri 7am – Sat 7am: 2-2.5 inches with up to 3 inches on higher terrain of Lionshead
 - Heaviest rain expected early Fri morning – Fri afternoon
 - No potential impacts expected
- Holiday Farm (most likely)
 - Thu 10am – Fri 7am: 1-1.5 inches
 - Fri 7am – Sat 7am: 1.5-2.5 inches
 - Heaviest rain expected early Fri morning – Fri afternoon
 - No potential impacts expected

NOTE: Another system will bring rain on Sun & Mon



SNOW ACCUMULATION

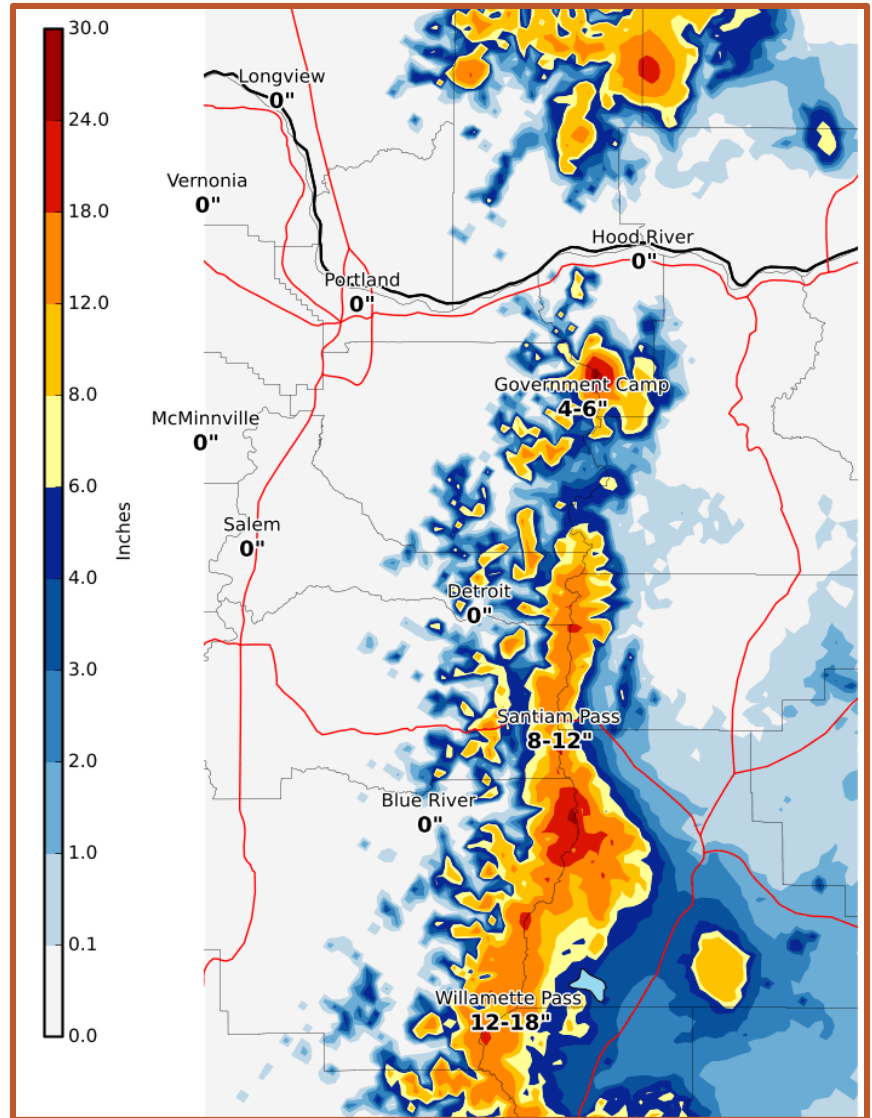
Fri 12am – Fri 1pm





SNOW ACCUMULATION

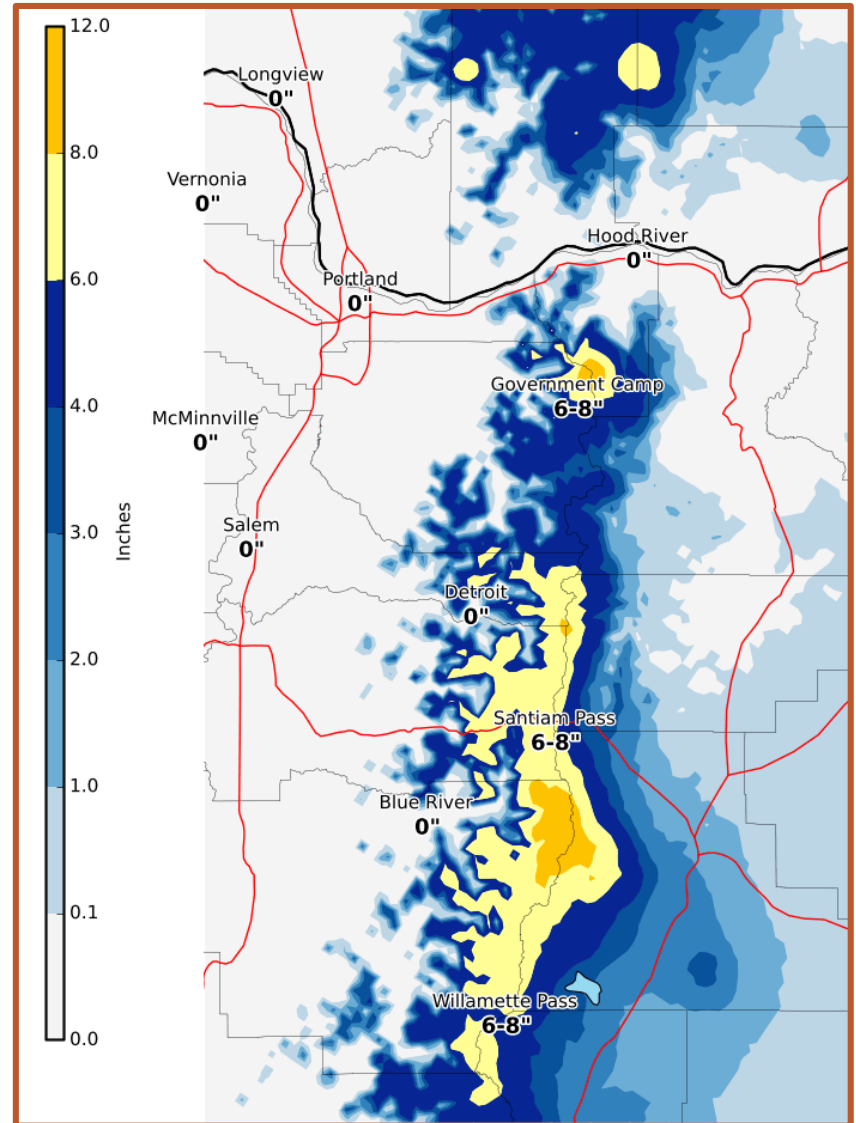
Fri 1pm - Sat 1am





SNOW ACCUMULATION




Sat 1am - Sat 10am





WIND SPEEDS

- Southerly winds expected with a strong front
- Will become westerly late Friday evening
- Strongest winds
 - Along the coast: Friday 12am – Fri 6pm
 - Willamette Valley: Friday 3pm – Friday 7pm
 - Cascades: Friday 10pm – Saturday 4am
- Forecast Wind Speeds
 - Along the central Oregon Coast: gusts 35-40 mph with isolated up to 45 mph
 - North Oregon/South Washington Coast: gusts 20-25 mph
 - Willamette Valley: gusts 25-35 mph with highest speeds through central valley
 - Cascades: gusts 35-45 mph with gusts up to 60 mph along more exposed terrain

Hazards	Impacts	Forecaster Confidence
Strong Winds	<ul style="list-style-type: none">• Potential for blown down trees/branches• Power outages• Road closures and travel delays are possible	<div>LowHigh</div> <div></div>
Heavy Rain	<ul style="list-style-type: none">• Localized flooding possible• Chance for urban flooding• Rivers remain low	<div></div>
Cascade Snow	<p>First heavy snow and breezy winds in Cascades</p> <ul style="list-style-type: none">• 1-2 ft of snow over 12 hours• Travel delays• Reduced visibility at times during heaviest snow rates & strongest winds	<div></div>



SUMMARY / IMPACTS

- Expectations have changed drastically over the last 24-hours
- Impacts will be less than expected but will still see gusty
 - winds, heavy rain & Cascade snow through the Passes
- First wave of precipitation this afternoon with the second front
 - coming Friday afternoon into Saturday morning
- Confidence for winds remains low while higher confidence in
 - rain and snowfall



RESOURCES

Some resources to stay informed

- weather.gov/portland
- www.nwrfc.noaa.gov
- Forecaster hotline
- NWS Chat
- Twitter: @NWSPortland
- Facebook: www.facebook.com/NWSPortland